

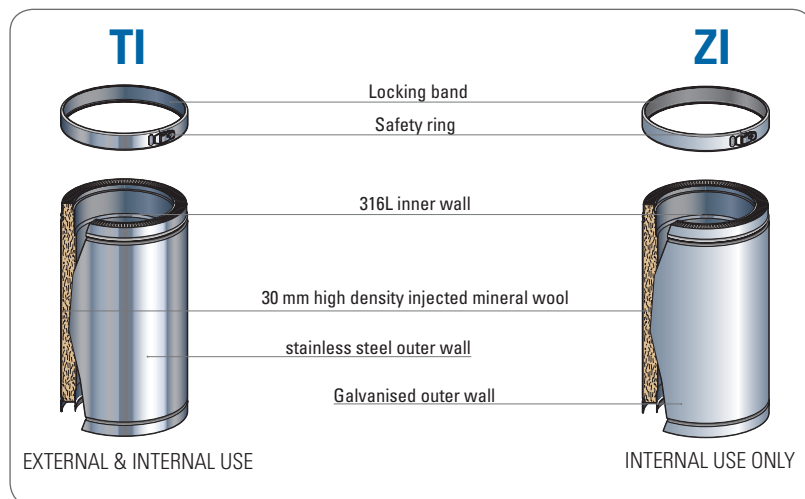
THERMINOX

Twin wall insulated multi-fuel chimney system

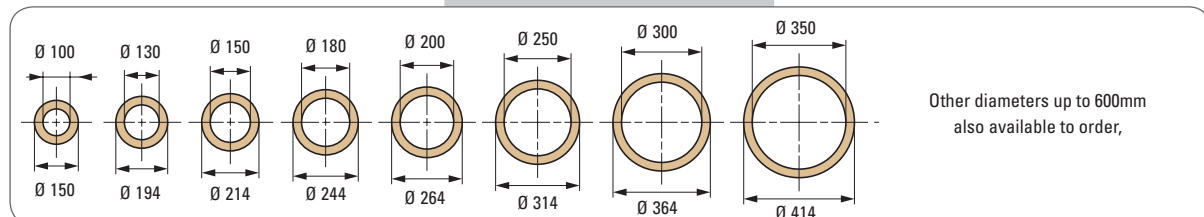


0071-CPD-0011
T450 N1 W V2 L50040 G50
T250 N1 W V2 L50040 Q20

THERMINOX is a high quality, multi-fuel, stainless steel twin wall chimney system. Available as TI with a bright stainless steel outer case and for internal use our ZI has a galvanised outer casing. THERMINOX is designed for use with all solid fuel, wood, coal, gas, oil and pellet heating appliances. It is ideally suited for operating temperature up to 450°C and comes with a 10 year AXA backed guarantee.



Diameters

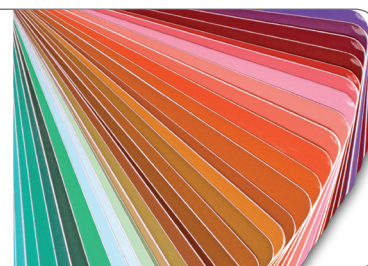


Optional finishes

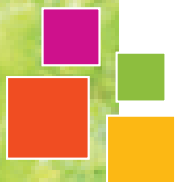
BLACK: Powder coated satin finish (stock item)

POWDER COATED: Any RAL colour

COPPER OUTER CASE



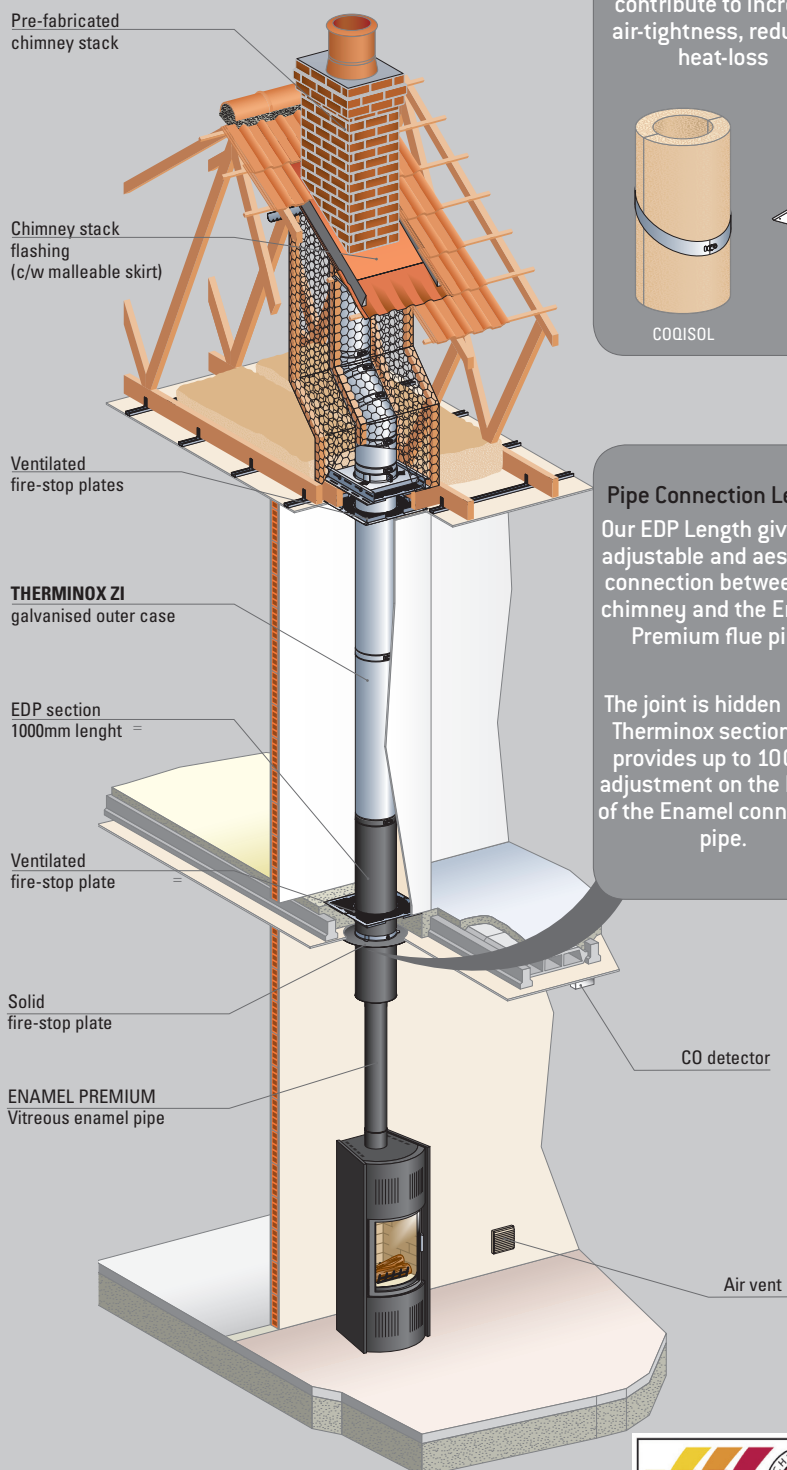
TECHNICAL DATA								
Inner wall material	AISI 316L stainless steel							
Outer wall material	AISI 304 stainless steel or galvanised steel							
Thickness : Inner wall/Outer wall	0,4 / 0,4 mm						0,4 / 0,5 mm	
Thermal resistance	0,45	0,53	0,53	0,53	0,53	0,53	0,53	0,53



THERMINOX

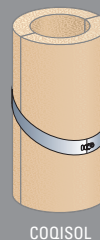
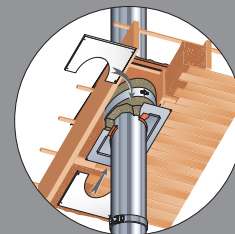
Twin wall insulated multi-fuel chimney system

Internal application



Air-tight solution

Our range of innovative AirTite® Flue Kits are designed specifically to contribute to increase air-tightness, reducing heat-loss



COQISOL



PP PDSE



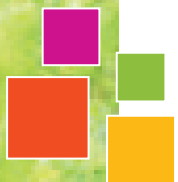
PDSE

Pipe Connection Length

Our EDP Length gives an adjustable and aesthetic connection between the chimney and the Enamel Premium flue pipe.

The joint is hidden in the Therminox section and provides up to 100mm adjustment on the length of the Enamel connecting pipe.





THERMINOX

Twin wall insulated multi-fuel chimney system

External application

Rain Cap

Wall Bracket
with extension arms

Wall Support

THERMINOX TI
stainless steel
outer case

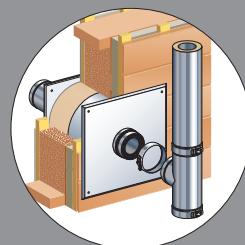
135° Tee
with base plug

Wall Plate

ENAMEL PREMIUM
vitreous enamel pipe

Air-tight solution

Our range of innovative
AirTite® Flue Kits are
designed specifically to
contribute to increase
air-tightness, reducing
heat-loss



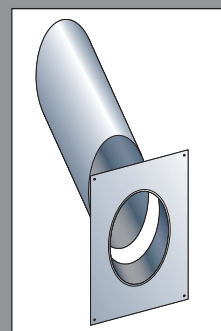
KTM TZ

* Special regulations apply to this type of layout

135° Wall Sleeve

Allows the installer to
bridge the cavity forming
a protective sleeve

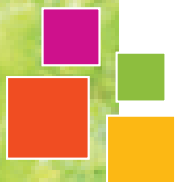
It can be cut to length



EDP section
450mm length

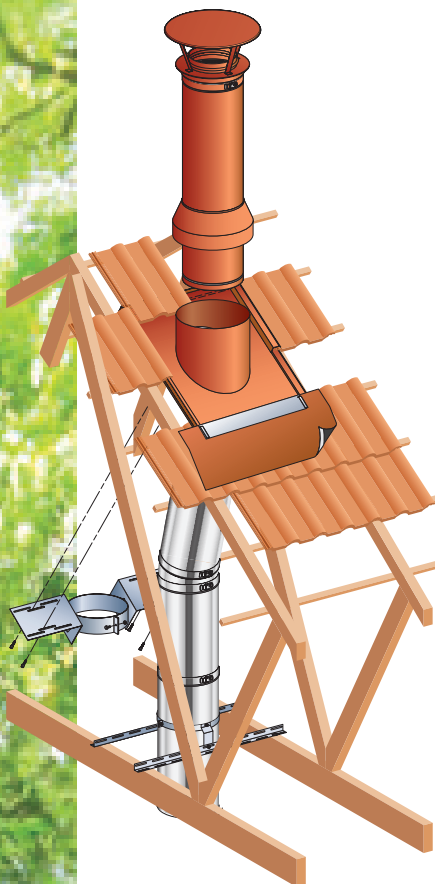
Air vent





THERMINOX CHIMNEY STACK

Self supported twin wall insulated chimney stack



The THERMINOX CHIMNEY STACK is an innovative evolution of the standard Therminox chimney termination using modern engineering design principles. This provides a simple weather proof solution for mounting the chimney on the roof.

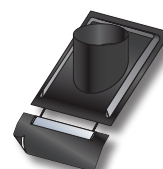
Benefits

- Up to 3m freestanding above roof.
- Aesthetically pleasing look.
- Guaranteed leak-free flue collar.
- Quick and easy to install.
- Customer satisfaction.
- Easily meets regulation requirements
- CERIC tested

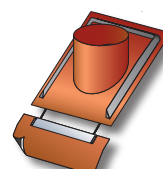


Flashing

Supplied with our engineered flashing system, very easy to position in place of 4 or 6 tiles and delivers a perfect seal to the roof. This unit is self-levelling can be installed on the roof first allowing the internal sections to be fitted at a later date.



black
c/w malleable skirt



terracotta
c/w malleable skirt

TECHNICAL DATA

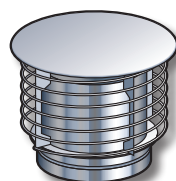
- > Comes as standard in black or copper brown, this chimney stack can be easily incorporated into any architectural environment.
- > Achieve the correct termination height in accordance with building regulations.
- > Optimise your working process, install several chimneys through the roof in one day.

Designed terminals

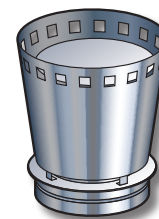
NEW



GALACTIC



SPIRAL



VÉNITIEN