



# ENAMEL PREMIUM

Vitreous enamel connecting flue pipe

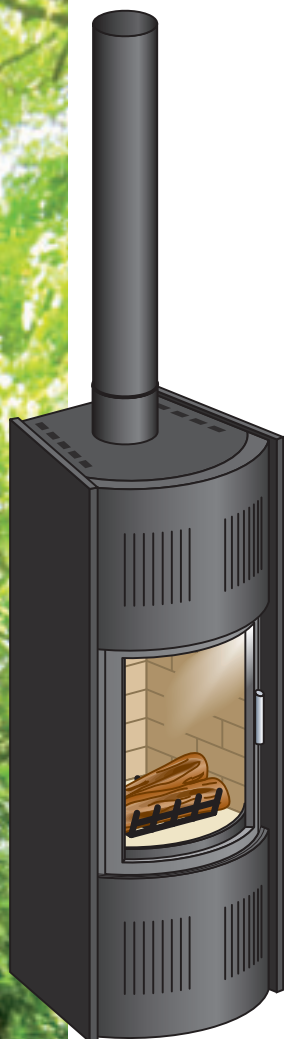


0407-CPD-007  
T600 N1 D Vm L80050 G(800,800)

The ENAMEL PREMIUM is an innovative evolution of the vitreous connecting flue pipe, using modern engineering design principles and combined with «state of the art» manufacturing process. This provides the optimum solution for connecting flue pipes.

## Benefits

- A high quality, aesthetic appearance.
- The unique push-fit joint requires no fire-cement or fixings.
- Very high resistance to scratching.
- High temperature, acid & tar, resistance
- Quick and easy to install.
- Exceptional value
- 10 year guarantee
- CERIC tested



## 5 colours available



Gloss white



Matt grey



Matt black

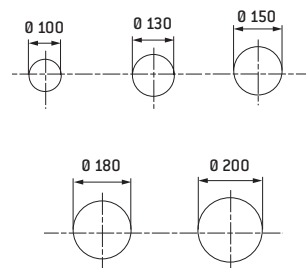


Gloss black

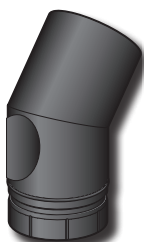


Gloss brown

## Diameters



## Special components



Segmented elbow with access door



0 to 90° Adjustable Elbow  
For black finish use high temperature Spray Paint



Damper Length

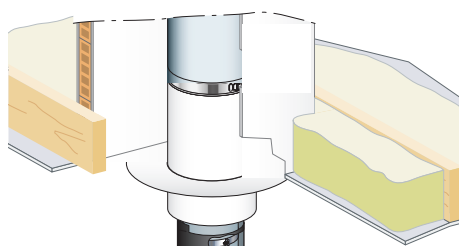


Draught Stabiliser



# VENTILATED COVER PIPE

Safety heat shield



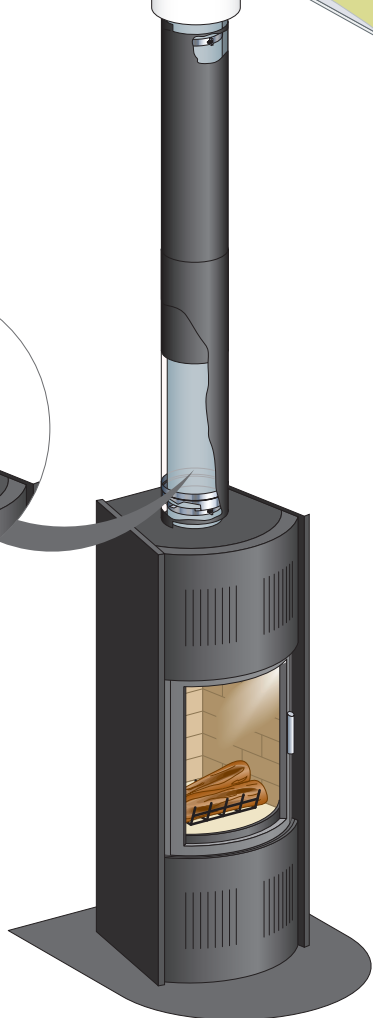
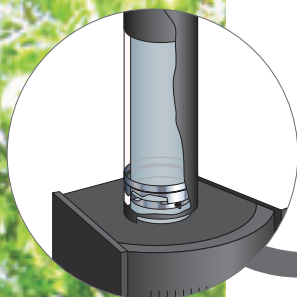
To complement our range of vitreous enamel connecting flue pipes, you can order and install a Ventilated Cover Pipe. This allows a reduced clearance from combustible material of only one diameter away from the pipe.

They are adjustable elements 710mm to 1500mm, CE Marked and tested, so that they can be installed over straight sections of Enamel Premium.

They come as standard in Black RAL 9019 and can be provided in 8 other RAL colours to order.

## Benefits

- Reduce clearance from combustible material of only one diameter away
- Increased safety
- Increases air-flow and heat transfer
- Quick and easy to install
- CE marked and CERIC tested



## 8 choice of colours



FLAME RED  
RAL 9021



PURPLE RED  
RAL 9022



MOSS GREEN  
RAL 9025



SAPPHIRE BLUE  
RAL 9024



SIGNAL  
BROWN  
RAL 9029



CHOCOLATE  
BROWN  
RAL 9028



SLATE GREY  
RAL 9027



MOUSE GREY  
RAL 9026